

My experience with ENGIN

Подзиваловський Олександр Дмитрович
115-сг МДПУ імені Богдана Хмельницького

What is ENGIN?

ENGIN is a remote volunteer program for conversation partners.

They match volunteers with people in Ukraine and facilitate weekly video chats.

It helps Ukrainians practice English while sharing cultures and building connections.



The graphic features the ENGIN logo at the top center, which consists of the word "ENGIN" in a blue box with a speech bubble tail. Below the logo is a stylized world map composed of blue dots. Six video call windows are overlaid on the map, each connected to a point on the map by a thin line. The windows show diverse individuals: a woman with blonde hair, a man with glasses, a man with a beard, a woman with red hair, a woman with glasses, and a woman with dark hair. The overall design is clean and modern, emphasizing global connectivity.

HELPING UKRAINE SPEAK TO THE WORLD

ENGLISH SPEAKING PRACTICE & CULTURAL EXCHANGE FOR UKRAINIANS
FLEXIBLE ONLINE VOLUNTEERING FOR ENGLISH SPEAKERS

My “buddy”

Lucas Murphy is my studying partner in the ENGIN program.

He lives in Bloomington, Indiana, with his wife, who is an immigrant from Albania.

He owns a construction/landscaping business and teaches high-level English on the side.



Meeting confirmation



It's me!

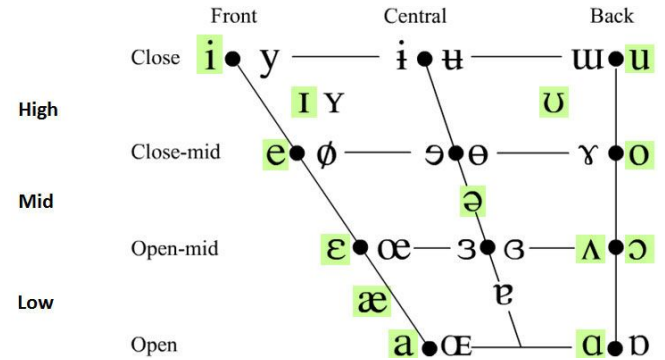
The problem

Lack of good and accessible visual examples to study how phonemes are produced.

Video recordings



IPA chart



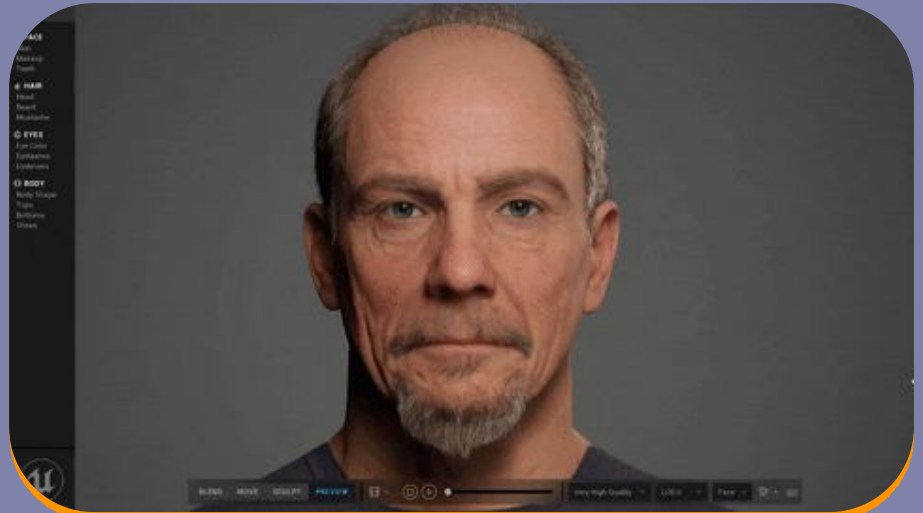
MRI speech recording

The solution and tools

3D approach to creating visual content.

Unreal Engine and Metahuman technology advantages:

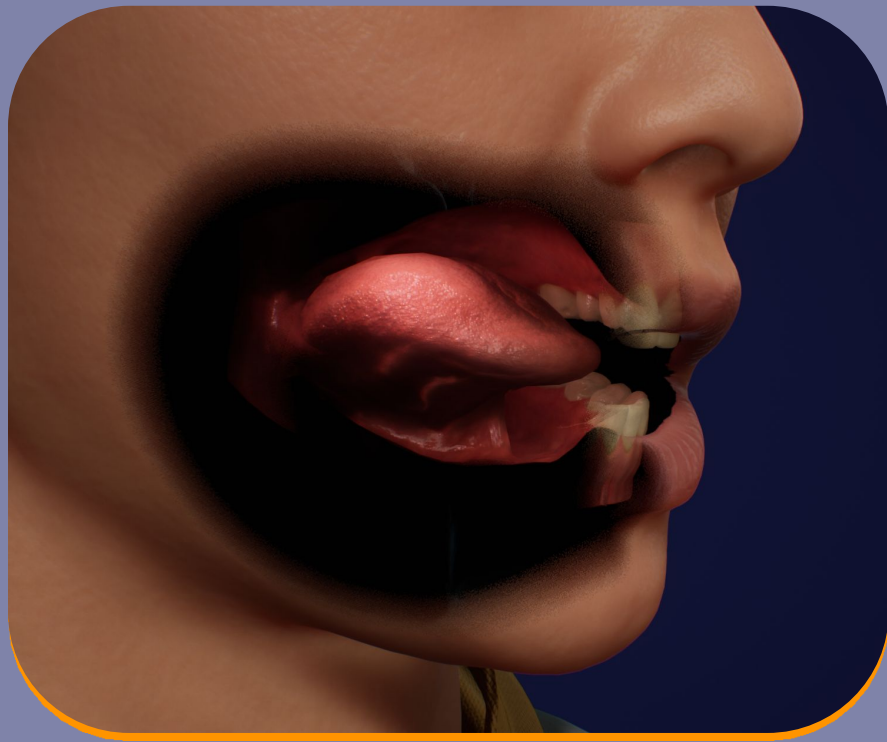
- Software availability;
- Free high-quality assets;
- Audio to animation conversion with AI.



The prototype



Accurate lips' movement from audio.



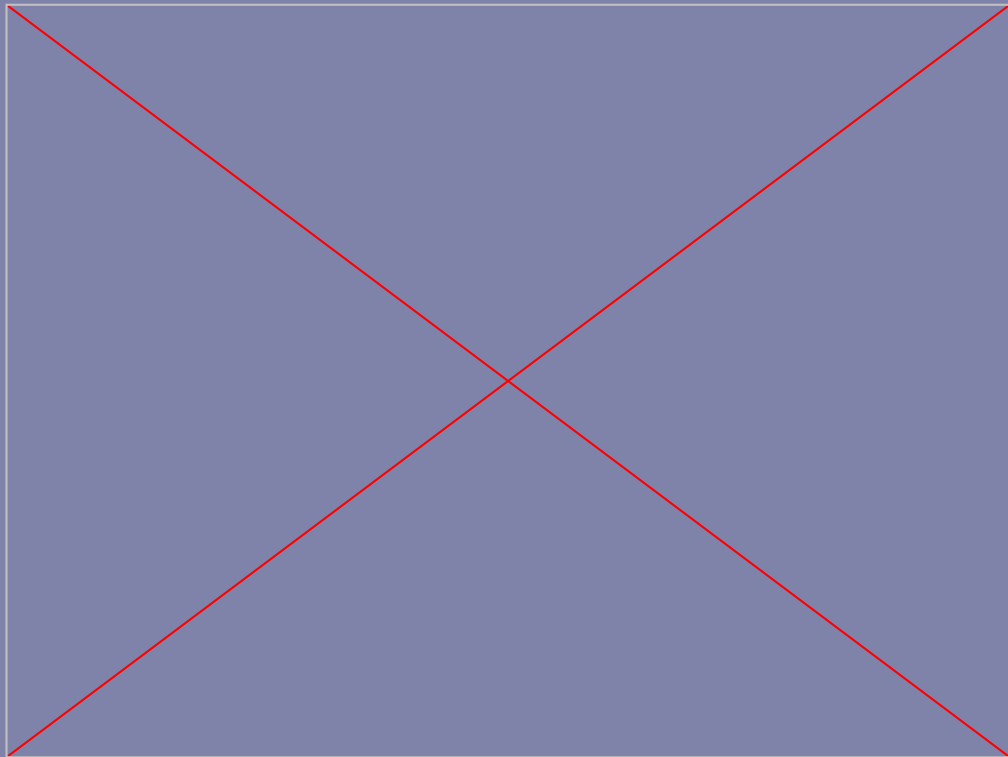
The inside view of the mouth.



Phonetic pangram

“Are those shy Eurasian footwear, cowboy chaps, or jolly earthmoving headgear?”

Practical example



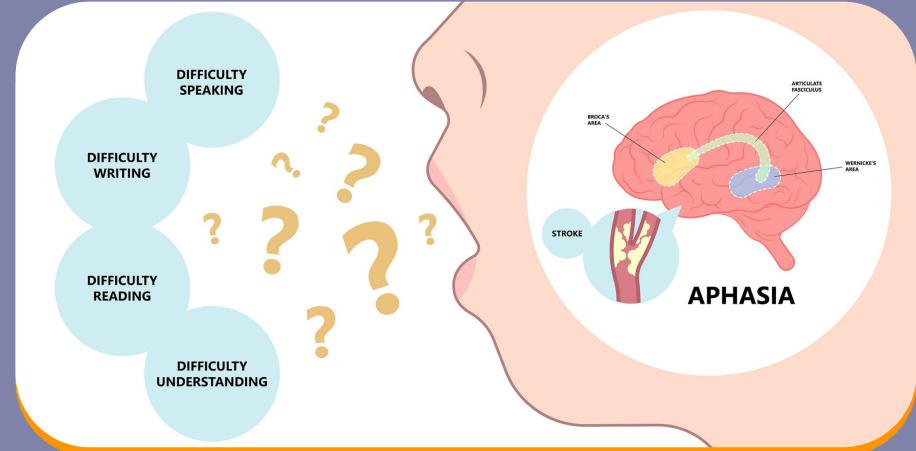
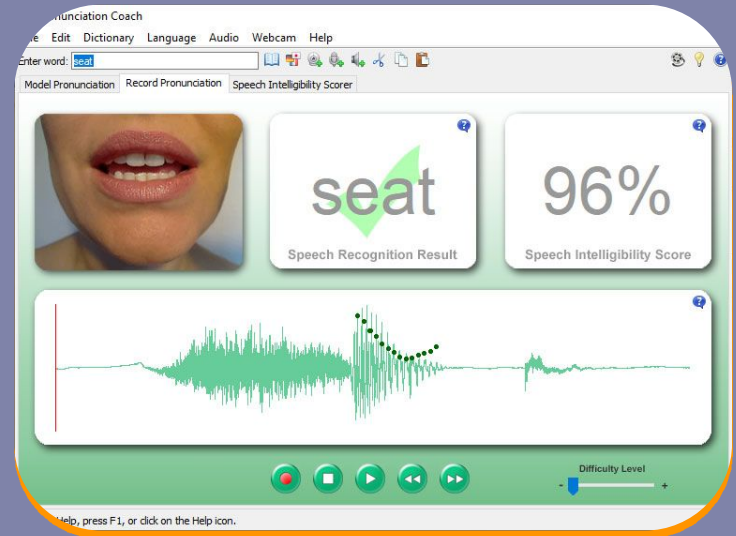
Discovering cases of unusual tongue placement during natural speech.

Potential of the method

Academic potential - hands-on studying of phoneme production process even in complex scenarios (connected speech, unique phonetic phenomena, accents, and dialects).

Commercial potential - an application for visual materials for linguistic courses, or for casual learning.

Medical potential - Aphasia speech therapy.

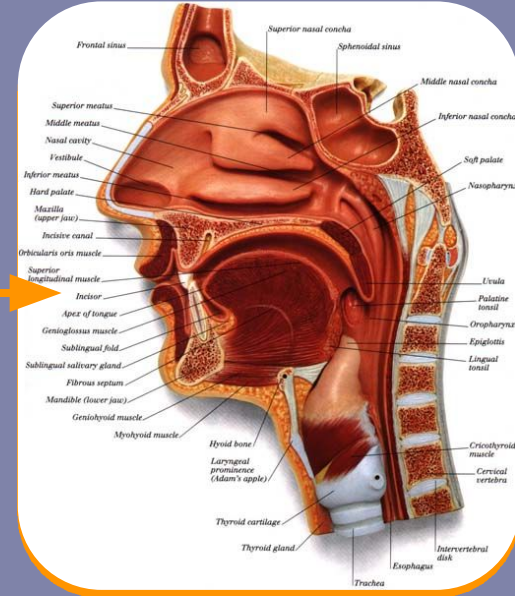


Plans for the future

Though useful, this is still an **approximation** of real speech.

Areas in need of improvement:

- Visual fidelity
- Accuracy of movement
- Anatomical accuracy
- Streamlining the process
- Other languages



Conclusion

ENGIN provided a platform for me to grow by communicating with interesting people from abroad.

This led to a great opportunity to apply my professional skills to the academic field of linguistics.

